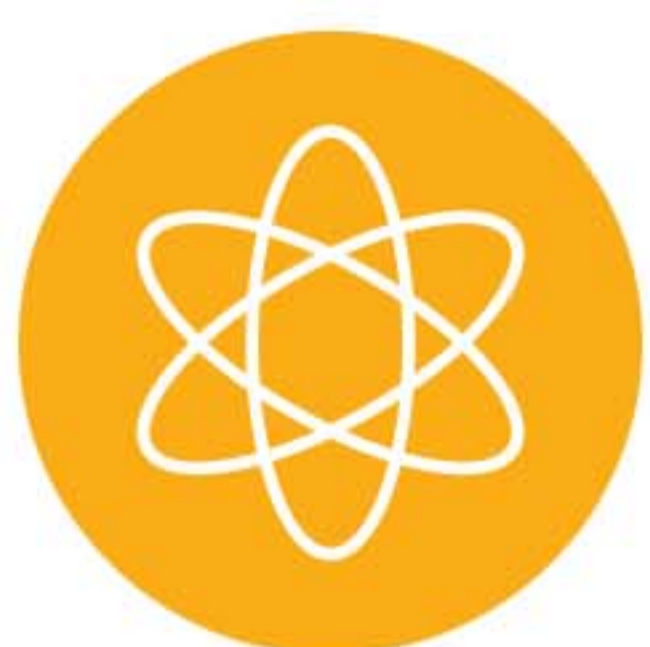


KidsBuddy

KG 2 Ebook Science



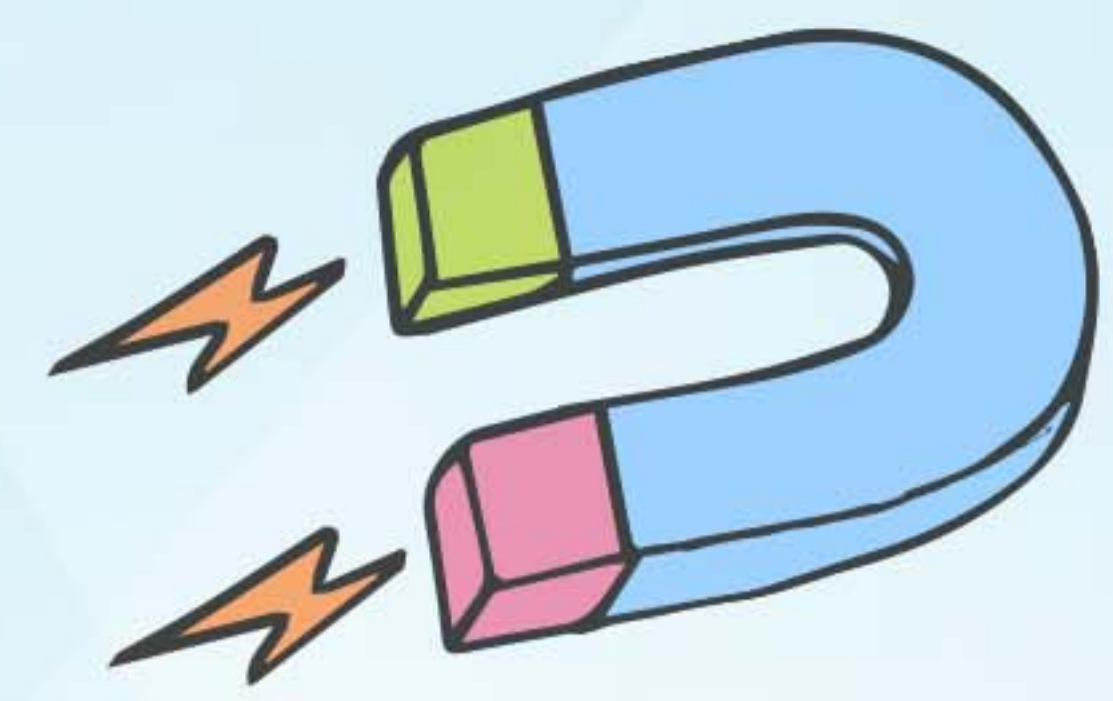
Download on the
App Store

GET IT ON
Google Play





Index



Chapter 1..... 1

Plants 1

Knowledge card 1

Kids challenges 15

Quiz..... 23

Chapter 2..... 28

Humans and Animals..... 28

Knowledge card 28

Kids challenges 41

Quiz..... 47


Chapter 3..... 53

Materials and Properties..... 53

Knowledge card 53

Kids challenges 65

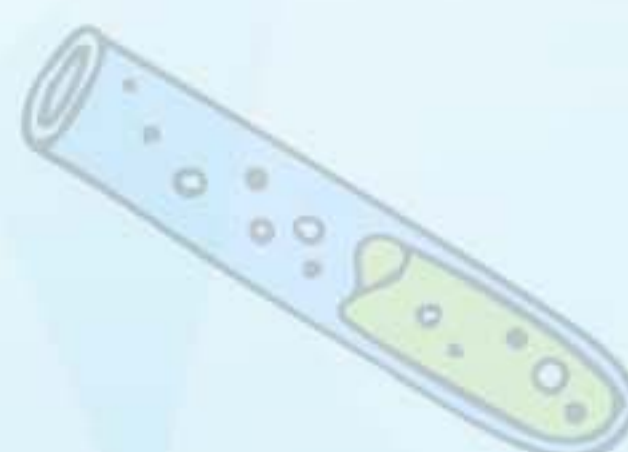
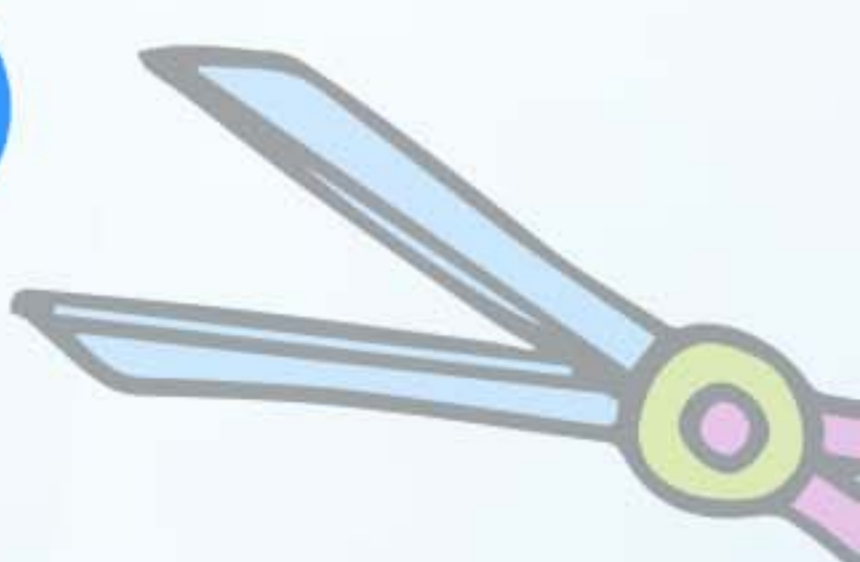
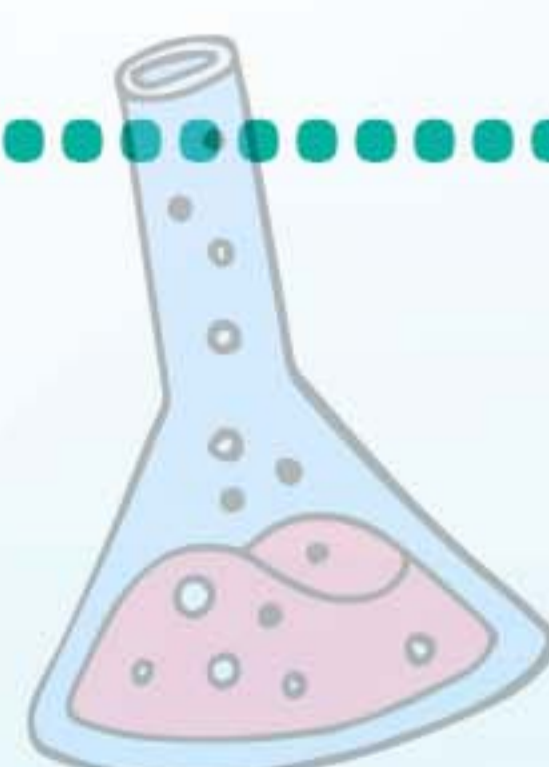
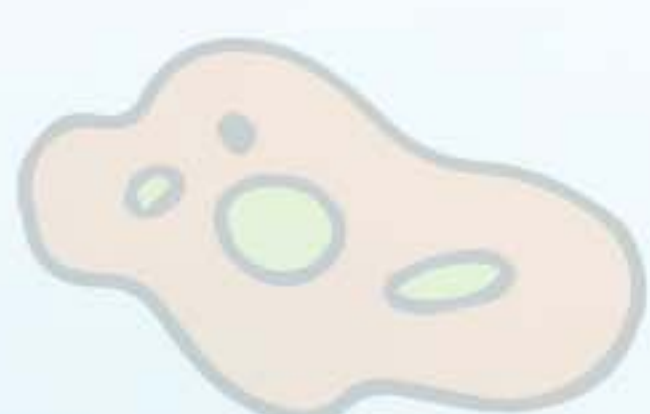
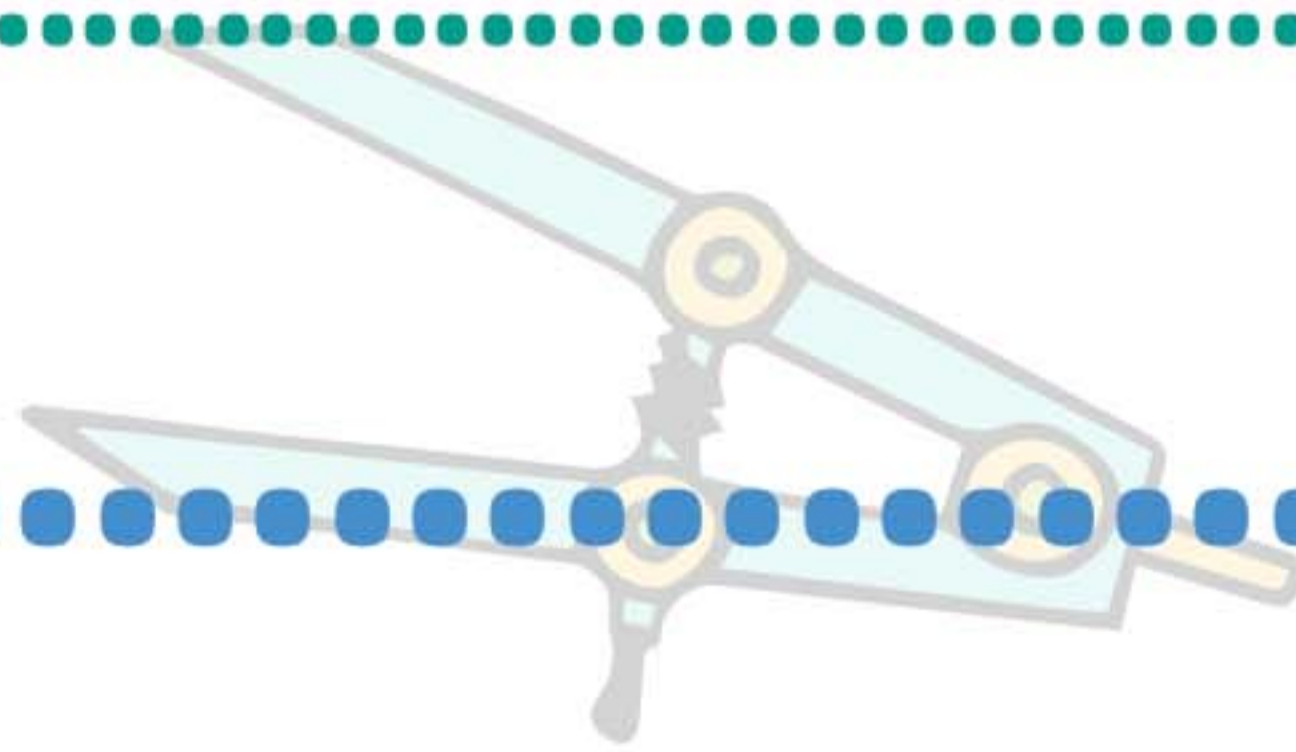
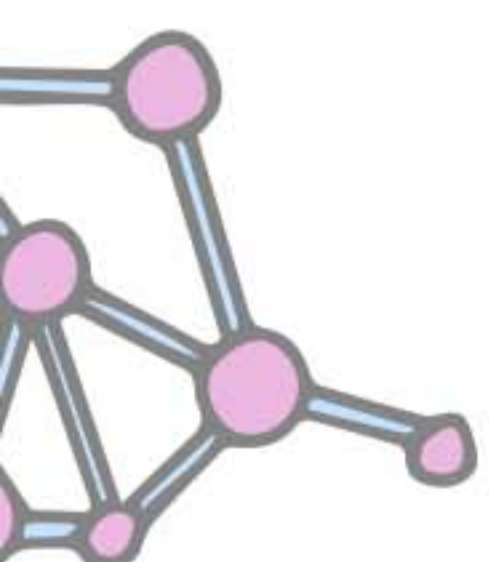
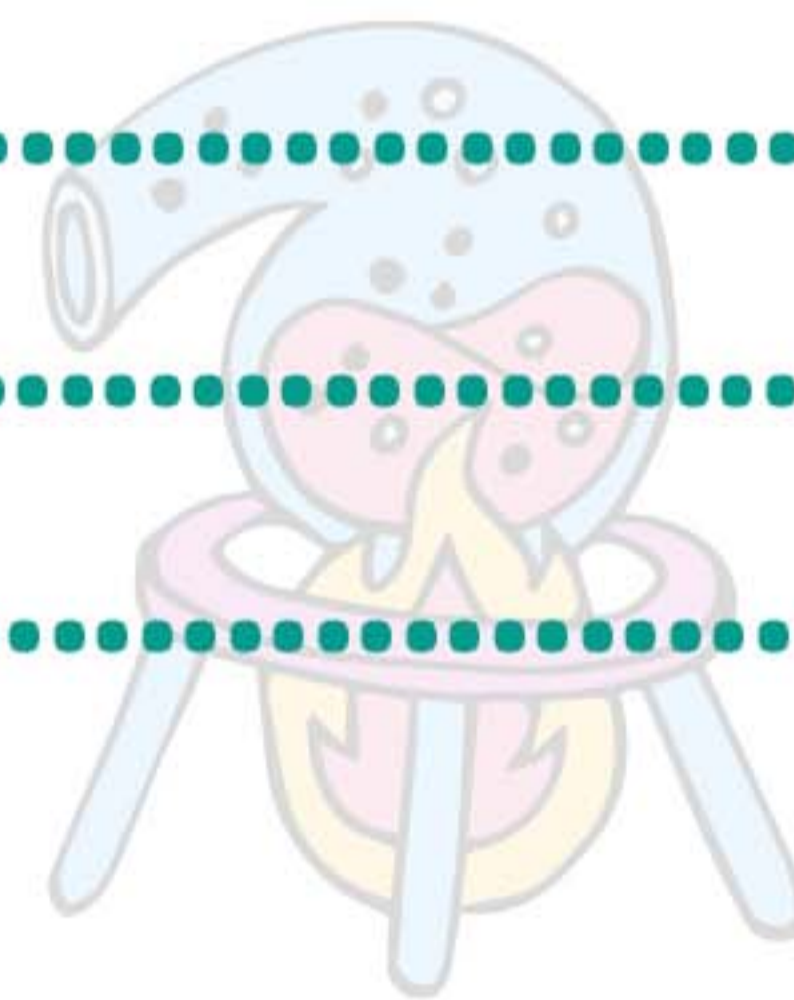
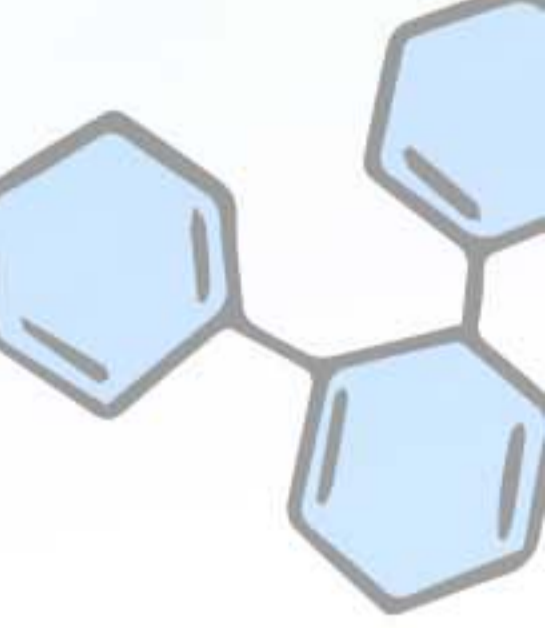
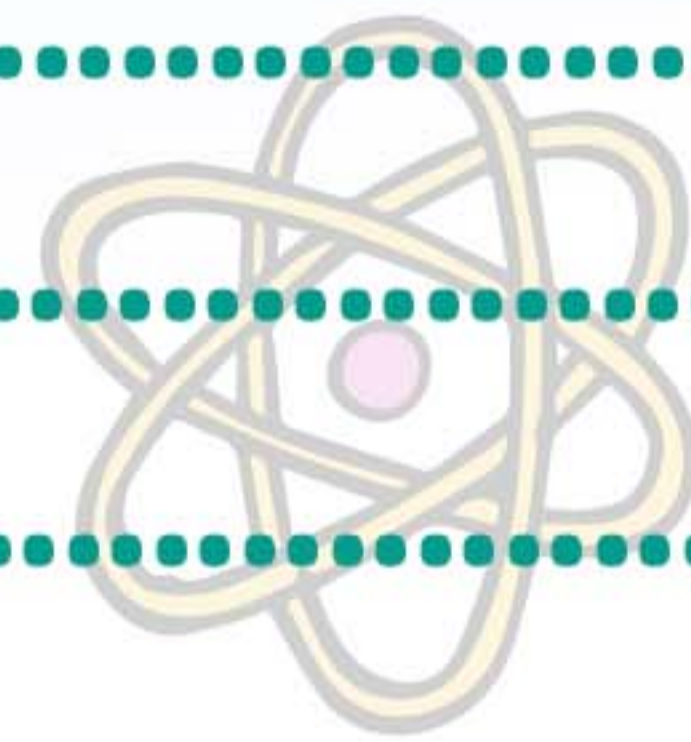
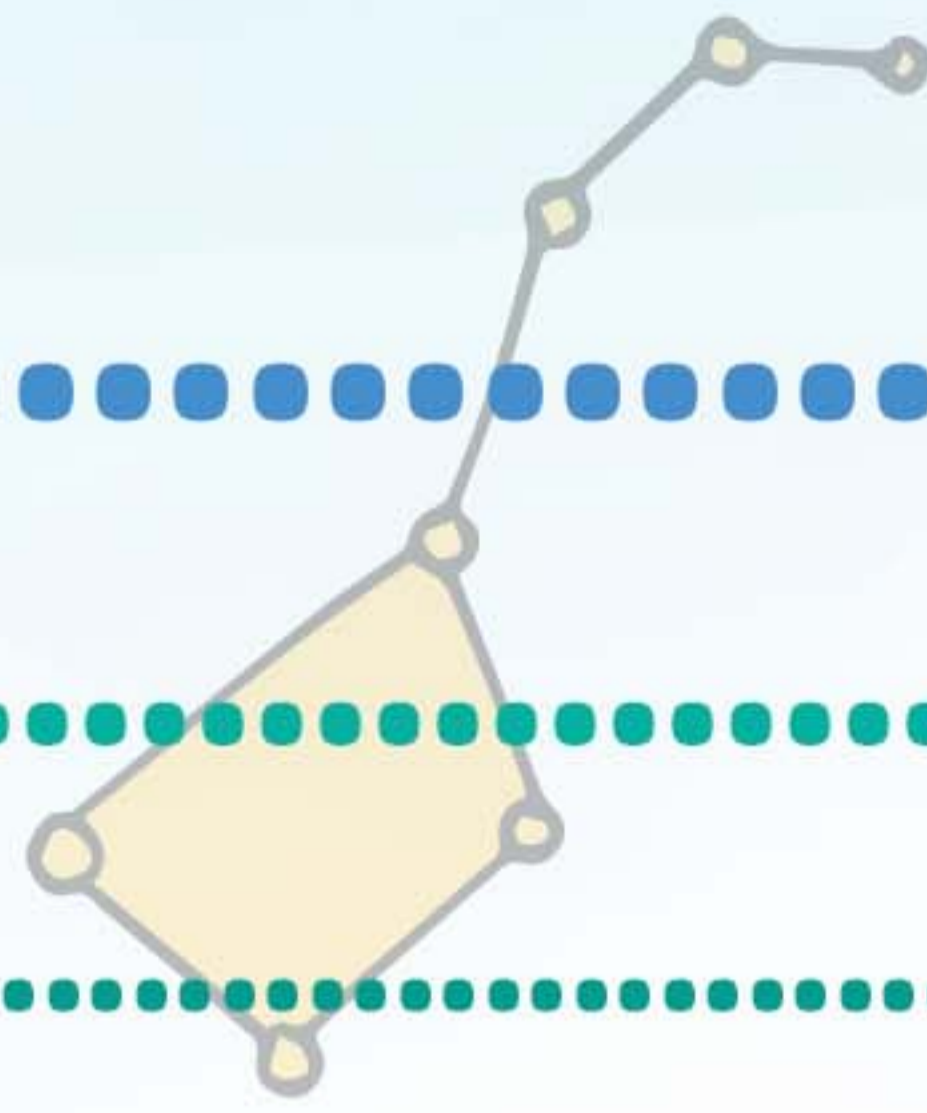
Quiz..... 73

Chapter 4..... 

Forces..... 

Chapter 5..... 

Sound..... 



KNOWLEDGE CARDS

Chapter 1

Plants

1 Parts of plants

Stem



Seed



Plants are living things that can be found all over the land of Earth. They come in many forms, such as grass, trees, bushes, ferns, and mosses. A plant has different parts, including the flower, stem, leaf, and roots. The roots of a plant are responsible for absorbing water and minerals from the soil. The primary functions of the stem include supporting the plant, transporting water and nutrients, storing food, and reproducing.

1.1

The parts of plants are?

Stem

Flower

Roots

All of these

1.2

Identify True or False.
Plants are not a living organism

True

False

1.3

What all thing does roots absorbs?

Minerals

Water

Both of them

1.4

The primary functions of the stems are?

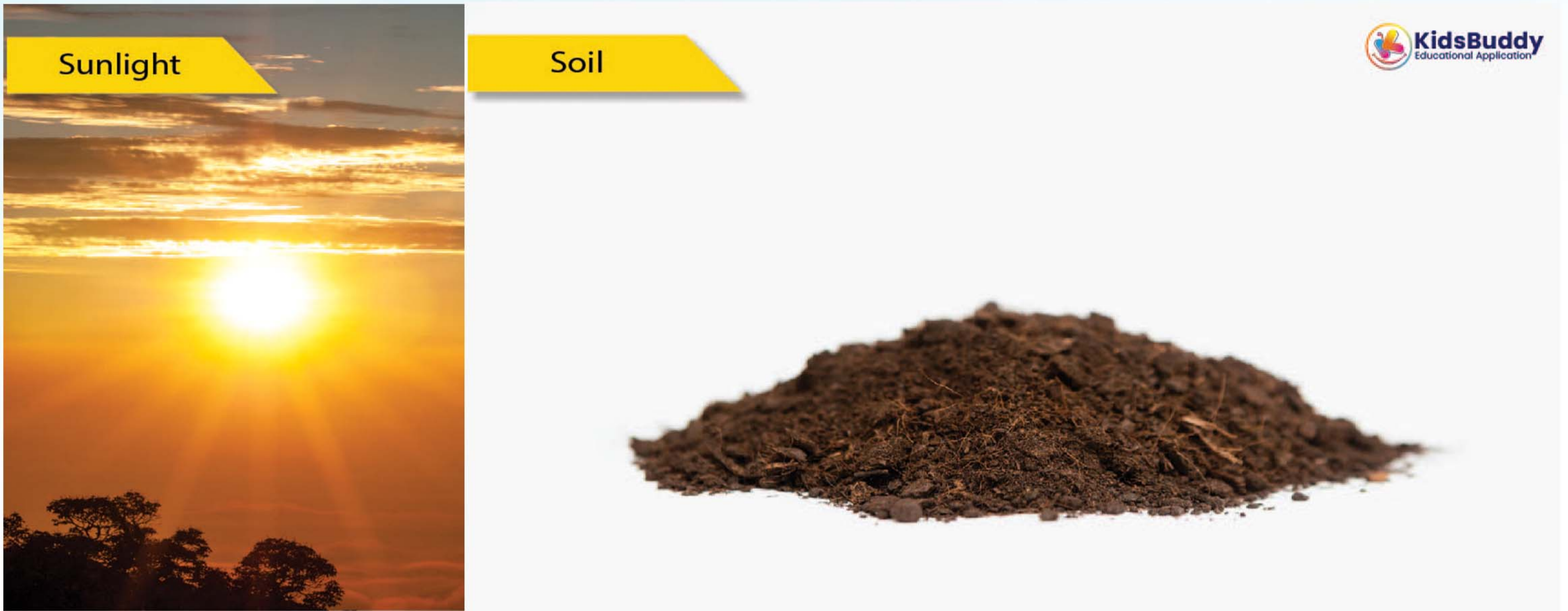
Supporting

Transporting

Storing

All of these

② Plants



Plants are living organisms that grow from the soil. They have the ability to convert light from the Sun into food through a process called photosynthesis. Plants come in many different sizes, from small to large, and include grass, trees, bushes, ferns, mosses, and more. Most plants start their life from a seed, which is the hard part inside a fruit. The process of a plant growing from a seed is called germination. Once a seed is planted in soil, it can grow into a new plant if it receives enough sunlight, water, and nutrients from the soil.

2.1

Which of these helps a plant to make food?

Paper

Sun light

Soil

Plastic

2.2

The hard part inside a fruit is called?

Leaf

Stem

Seed

Roots

2.3

State True/False
Most of the plants grow from seeds

TRUE

FALSE



KidsBuddy is an educational application platform designed for schools, teachers, and students to improve student learning outcomes in a measurable and visible way.

DOWNLOAD THE APP 

GET IT ON
PLAY STORE

DOWNLOAD ON THE
APP STORE



3 Flowers

Rafflesia Arnoldii



Rose



Marigolds



The portion of a plant that blooms is called a flower. The seeds from flowers can grow into new plants. Almost all plants, including many trees, produce flowers. The flower is the beautiful and reproductive part of the plant. Flowers are in different colors and shapes. Marigolds, roses, Lilly, Lotus, Hibiscus, and Sunflower are some examples of flowers. 'Rafflesia Arnoldii' is the biggest flower in the world. The Kadupul flower is the most expensive flower.

3.1 The portion of a plant that blooms is called _____

Root

Flower

Stem

Fruits

3.2 The seeds from flowers can grow into new plants.
State True/False

True

False

3.3 Choose the name of a flower.

Sunflower

Orange

Tomato

Mango

3.4 Say Yes/No.
'Rafflesia Arnoldii' is the biggest flower in the world

YES

NO

4 Root

radish



beetroot



Carrot



A plant's root is a component that is often located beneath. There are many uses for roots. They support the plant and keep it standing straight on the ground. They absorb food and water from the soil. They also preserve the plant's food in storage. Carrot, beetroot, radish, Cassava, and Yam are some examples of plants that store food in roots.

4.1

A _____ is a part of a plant that is usually hidden underground

Root

Flower

Stem

Fruits

4.2

Roots absorb food and water from the soil
State True/False

True

False

4.3

Find examples of plants that store food in roots.

Sunflower

Radish

Tomato

Mango



KidsBuddy is an educational application platform designed for schools, teachers, and students to improve student learning outcomes in a measurable and visible way.

DOWNLOAD THE APP 

GET IT ON
PLAY STORE

DOWNLOAD ON THE
APP STORE



5 Stem



Strong stems support the plant's weight. It also permits the circulation of nutrients and water from the root to the leaves. Celery, asparagus, and sugar cane are a few examples of stems that we eat. A plant's stem is an exterior component.

5.1 _____ support plant's weight

Root

Flower

Stem

Fruits

5.2 Stem also permits the circulation of nutrients and water from the root to the leaves.
State True/False

True

False

5.3 Find examples of plants that store food in Stem.

Celery

Orange

Tomato

Mango

6 Types of plants



Herb



Climbers



Tree



Shrub

Plants are classified into five based on their size, the nature of the stem, and lifetime. They are; Herbs, Shrubs, Trees, Climbers, and Creepers.

1. Herbs: It is normally short. It has a limited lifespan.

For ex: Mustard, Tulsi, Wheat.

2. Shrub: It is a bushy plant, and its stem is very thick.

For ex: Sunflower, Rose, Lime.

3. Trees: It has a Trunk and it has many branches.

Ex: Mango tree, Neem tree, Peepal tree.

4. Climbers: They need support to climb and grow.

Ex: Money plant, Cucumber, Grape Vine.

5. Creepers: Their stem is very weak so they can't stand straight and they grow on the ground.

Ex: Pumpkin, Watermelon, Strawberry, Sweet potato



KidsBuddy is an educational application platform designed for schools, teachers, and students to improve student learning outcomes in a measurable and visible way.

DOWNLOAD THE APP



GET IT ON
PLAY STORE



DOWNLOAD ON THE
APP STORE



6.1 Identify examples of herbs.

Sunflower

Neem tree

Mustard

Sweet potato

6.2 Identify examples of shrubs

Sunflower

Neem tree

Mustard

Sweet potato

6.3 Identify examples of Creepers

Sunflower

Neem tree

Mustard

Sweet potato

6.4 Identify examples of Creepers

Wheat

Rose

Grapevine

Watermelon

Answer key

- | | | | |
|-----|--------------|-----|--------------|
| 1.1 | All of these | 5.1 | Stem |
| 1.2 | False | 5.2 | True |
| 1.3 | Both of them | 5.3 | Celery |
| 1.4 | All of these | 6.1 | Mustard |
| 2.1 | Sunlight | 6.2 | Sunflower |
| 2.2 | Seed | 6.3 | Sweet potato |
| 2.3 | True | 6.4 | Grapevine |
| 3.1 | Flower | | |
| 3.2 | True | | |
| 3.3 | Sunflower | | |
| 3.4 | Yes | | |
| 4.1 | Root | | |
| 4.2 | True | | |
| 4.3 | Radish | | |

KIDS CHALLENGES

Chapter 1

Plants

1 Apple Experiment

Aim:

The aim of this activity is to observe the changes that occur in an apple slice when exposed to air and understand the reasons behind it.



Materials used:

Apple

Procedure:

Step 1: Cut the apple in half: Use a knife to cut the apple into two equal halves.

Step 2: Place the apple slices on a plate: Place the apple slices on a plate with the cut side

facing up..

Step 3: Observe the changes: Leave the apple slices in the open air for a few hours and observe any changes that occur, such as the apple slices turning brown

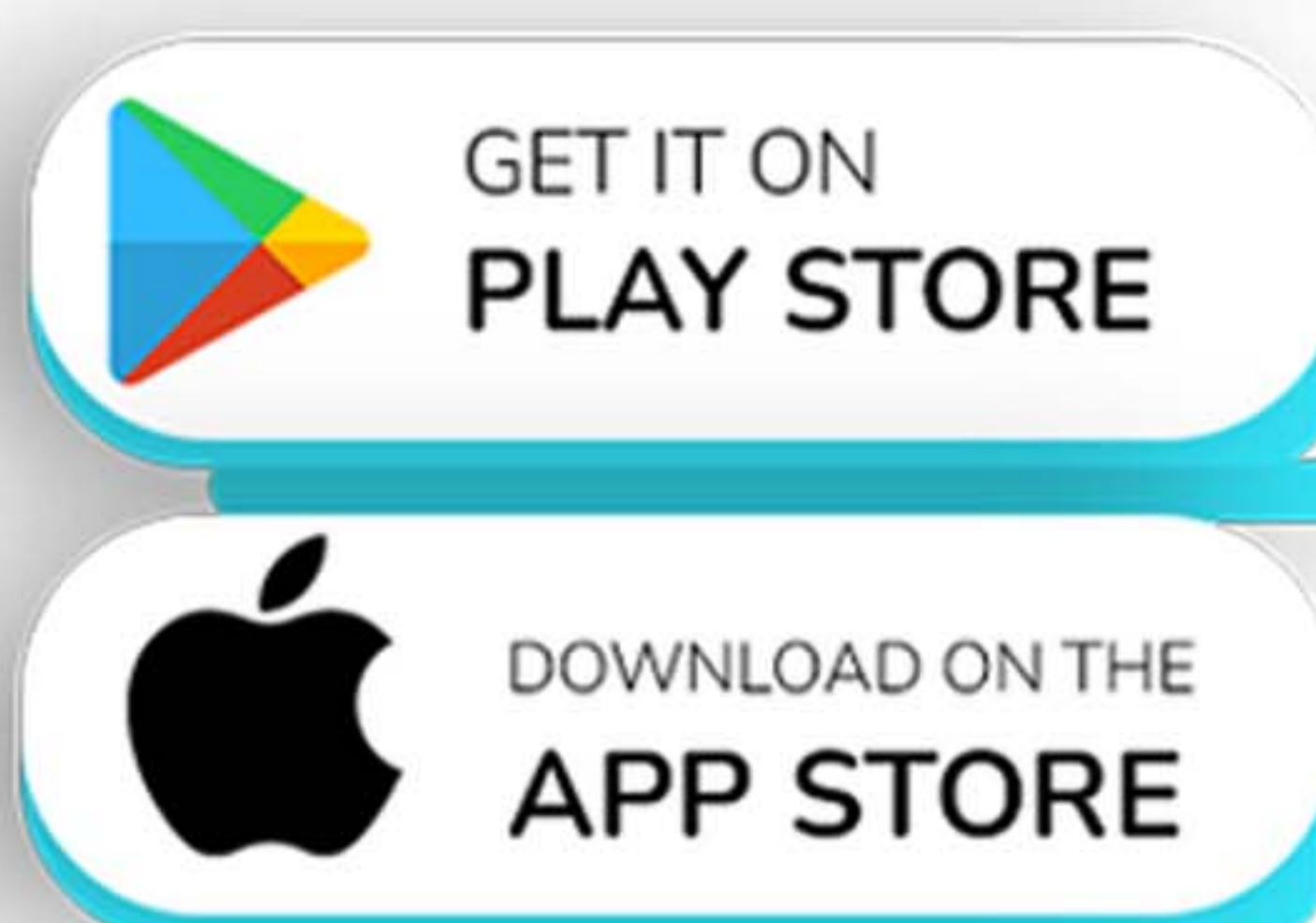
Output:

Try to understand why these changes occurred. The apple slices turned brown due to a process called oxidation, where the enzymes in the apple react with oxygen in the air.



KidsBuddy is an educational application platform designed for schools, teachers, and students to improve student learning outcomes in a measurable and visible way.

DOWNLOAD THE APP



2 Seed germination.

Aim:

The aim of this activity is to germinate seeds using paper towels and a jar. By following the instructions below, you will be able to observe the growth of seeds and learn about the process of seed germination.



Materials used:

Seed, paper towels, jar, water.

Procedure:

Step 1: Fill the jar with paper towels, making sure to fold them and push them down into the jar.

Step 2: Add seeds to the jar, making sure they are spread out evenly across the paper towels.

Step 3: Gently water the seed jar to wet the paper towels. You can sprinkle water on the paper towels in a way that the paper gets moistened.

Step 4: Place the jar in a warm and sunny location.

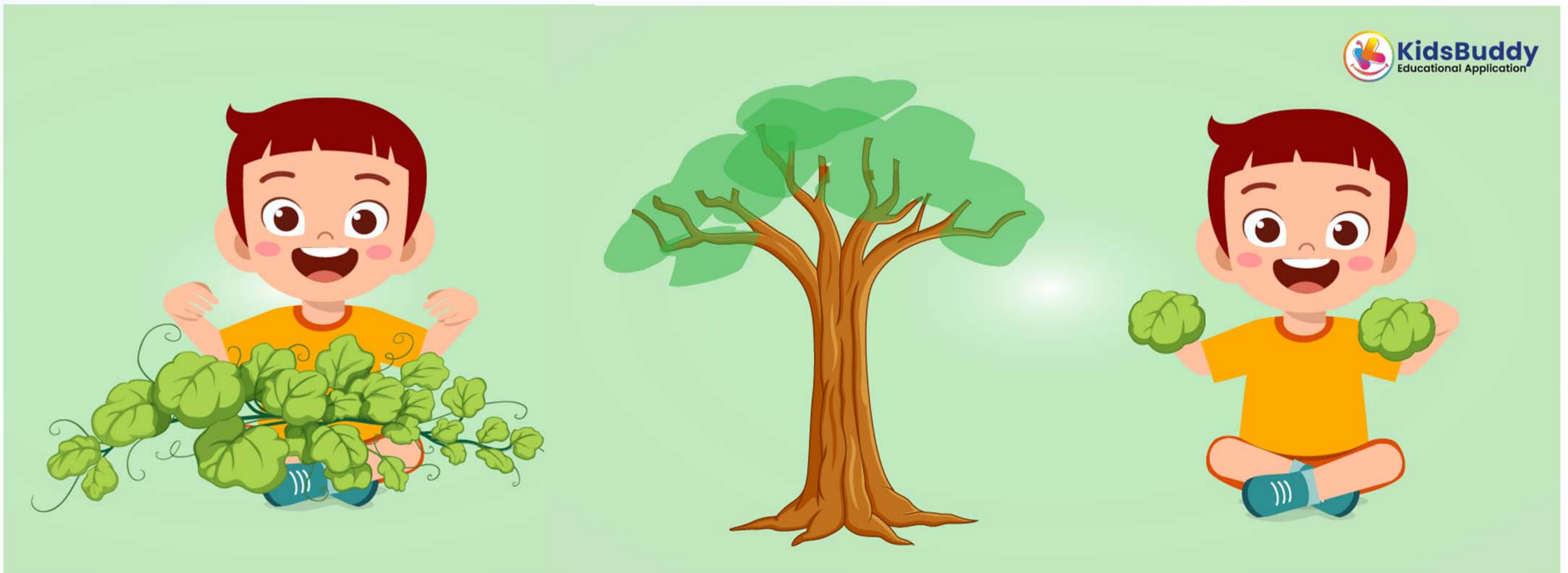
Step 5: Spray water on the seeds once a day for one week, making sure that the paper towels remain moist.

Step 6: After one week, carefully remove the paper towels from the jar and observe the growth of the seeds.

3 Chlorophyll Painting

Aim:

To explore the substances that give leaves their green color.



Materials used:

Paper, pen

Procedure:

Step 1: Draw a tree on a piece of paper, including only the trunk and branches.

Step 2: Collect some green leaves.

Step 3: Rub the green leaves onto the paper where desired.


Result:

Chlorophyll is the name of the green pigment that plants use to produce food during the process of photosynthesis



KidsBuddy is an educational application platform designed for schools, teachers, and students to improve student learning outcomes in a measurable and visible way.

DOWNLOAD THE APP 

 GET IT ON
PLAY STORE

 DOWNLOAD ON THE
APP STORE



3 Plant Lollipop

Aim:

To create parts of a plant using a lollipop and color paper



Materials used:

Lollipop, color papers, scissors, labels

Procedure:

Step 1: Take a lollipop

Step 2: Use color paper to create a flower and a leaf. Make a hole in the middle of both the flower and the leaf.

Step 3: Cover the lollipop stem with green color paper.

Step 4: Insert the lollipop through the hole in the flower and the leaf.

Step 5: Take some thread to create roots.

Step 6: Name the parts of the plant and label them

Result:

Understanding of the different parts of a plant.

QUIZ

Chapter 1

Plants

1 Which is the herb?

Cabbage

Potato

Carrot

Basil

2 Identify the fruit among them?

Rose

Apple

Jasmine

Sunflower

3 Find out the odd one.

Mango

Orange

Jackfruit

Jasmine

4 Which vegetable grows underground?

Banana

Carrot

Orange

Apple

5 Which flower turns towards the sun ?

Jasmine

Lotus

Sunflower

Rose

6 Which of the vegetable that can be usually eaten without cooking?

Cauliflower

Lady's finger

Brinjal

Carrot

7 A branch of a tree can have green _____

Root

Leaves

Hair

Trunk

8 Find the odd one out:

Carrot

Mango

Strawberry

Cherry

9 Find the vegetable that grows underground?

Chilly

Cabbage

Brinjal

Potato

10 Name the fruit with one seed?

Jackfruit

Apple

Mango

Orange

11

Which of the following vegetables that grow under the ground?

Tomato

Green peas

Cabbage

Carrot

12

Name a flower that grows in water?

Shoe flower

Sunflower

Lotus

Rose

13

Which of the following is a leafy vegetable?

Carrot

Spinach

Radish

Brinjal

14

Which flower plants have thorns?

Sunflower

Hibiscus

Rose

Lotus

15

Which fruit has many seeds ?

Mango

Custard Apple

Carrot

Radish

16

Which part of the plant grows under ground?

Stem

Root

Leaves

Flower

17

Which of the following vegetables that grow underground?

Cauliflower

Turnip

Spinach

Eggplant

18

Which fruit has its seeds outside?

Mango

Apple

Guava

Strawberry

19

Identify the name of the vegetable?

Apple

Mango

Brinjal

Orange



20

Identify the part of plants shown in the picture

Stem

Root

Flower

Leaves



Answer key

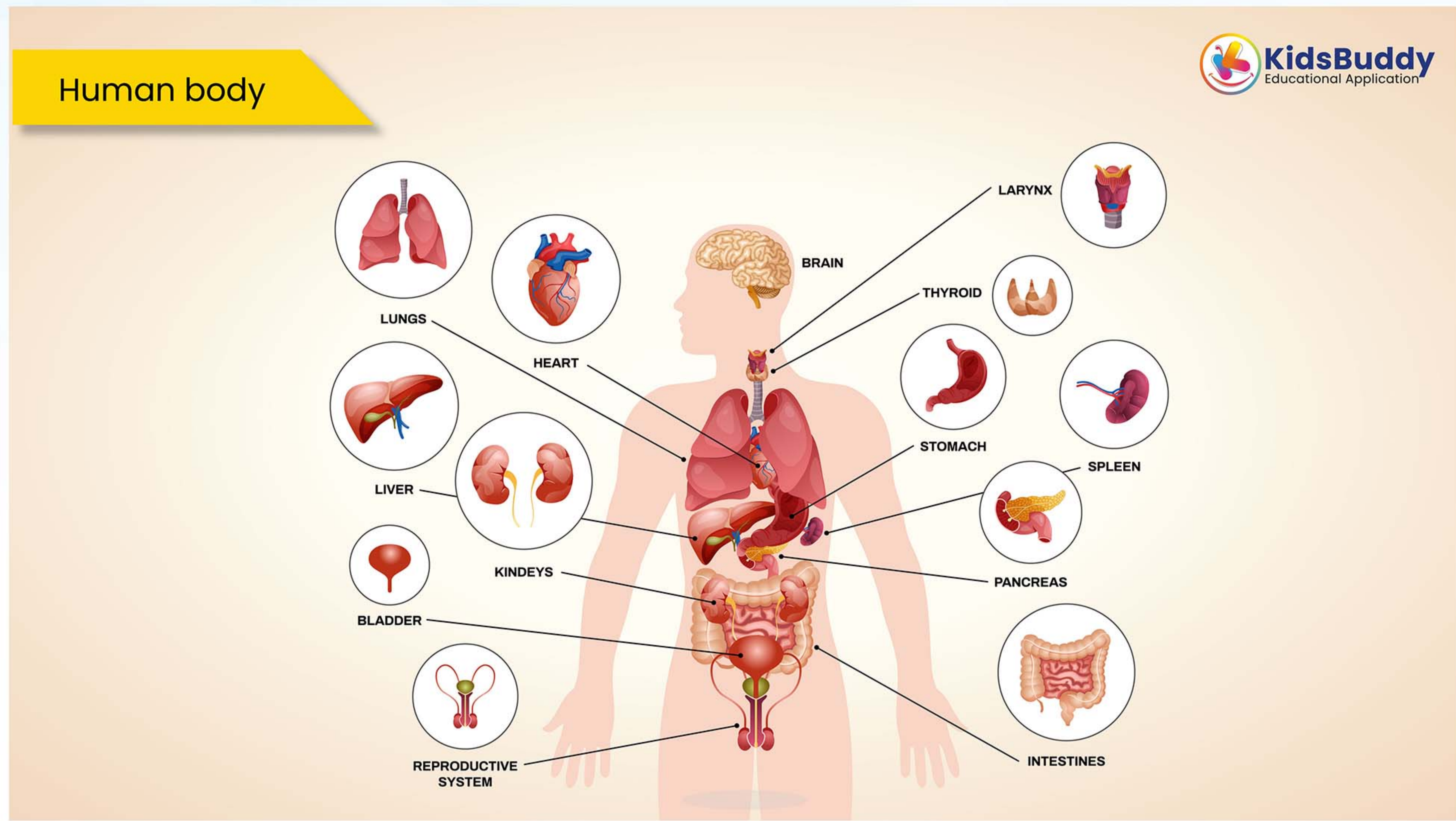
- | | |
|-------------|-----------------|
| ① Basil | ⑬ Spinach |
| ② Apple | ⑭ Rose |
| ③ Jasmine | ⑮ Custard Apple |
| ④ Carrot | ⑯ Root |
| ⑤ Sunflower | ⑰ Turnip |
| ⑥ Carrot | ⑱ Strawberry |
| ⑦ Leaves | ⑲ Brinjal |
| ⑧ Carrot | ⑳ Root |
| ⑨ Potato | |
| ⑩ Mango | |
| ⑪ Carrot | |
| ⑫ Lotus | |

KNOWLEDGE CARDS

Chapter 2

Humans and Animals

1 Human Beings



Humans are living beings and are classified as mammals. They usually live in groups and are known for being social animals. They help and protect each other. The human body is made up of various parts and systems that work together to perform the necessary functions of life. The human body is composed of cells and extracellular materials, and it has a very complex brain. There are many parts of the human body, and the study of these parts is called anatomy. This includes organs such as the heart, lungs, and brain, as well as bones, muscles, and tissues. Understanding the anatomy of the human body

is important for maintaining good health and treating illnesses or injuries.

1.1 Identify true or false.
Humans are not living organisms

True

False

1.2 The characteristics of the human beings are _____

Social animal

Helps each other

Protect each other

All of these

1.3 Humans have very _____ brain

Simple

Complex

None of these

2 Human Sense Organs



Humans are living beings and have various sense organs, which are parts of the body that help us to experience the world around us. There are five main sense organs that humans have: Eyes - used for seeing Ears - used for hearing Nose - used for smelling Tongue - used for tasting Skin - used for feeling or touching These sense organs help us to see, smell, hear, taste, and touch or feel things in our environment. We use our senses to learn about the world and make sense of the things around us.

They are an important part of how we experience and interact with the world.

2.1 How many sense organs are there?

2

3

4

5

2.2 We use sense organs to _____

To see

To smell

To hear

All of these

2.3 Identify the sense organ

Hair

Kidney

Skin

Nails



2.4 Identify the part which is not a sense organ.

Eyes

Brain

Nose

Tongue

3 Animals



Animals are biologically living. Animals need food and water to survive, just like plants do. Animals eat plants or other animals to nourish themselves, unlike plants, which can produce their own food. Animals are able to detect their surroundings. Their physical structures enable them to move in response to their surroundings. To find food, and safety, they move around and utilize their senses.

3.1 State True/False.
Animals are living beings

True

False

3.2 For growing animals need _____

Food


Surroundings

Friends



KidsBuddy is an educational application platform designed for schools, teachers, and students to improve student learning outcomes in a measurable and visible way.

DOWNLOAD THE APP 

 GET IT ON
PLAY STORE

 DOWNLOAD ON THE
APP STORE



4 Domestic Animals

Cow



Cat



Goat



Dog



Some animals are born and breed along with humans such animals are called Domestic animals. These animals can be kept as pets in houses. Dogs, and cats, are examples. Some animals provide different services to humans. some animals give food, like goats, cows, hens, etc. Some animals provide clothing material like wool from sheep.

4.1 Some animals are born and breed along with humans such animals are called_____

Domestic animals

Wild animals

4.2 Which animal gives us wool?

Dog

Goat

Hen

Sheep

4.3 Which animal gives us milk?

Cow

Dog

Hen

Cats

4.4 Which animal gives us eggs?

Cow

Dog

Hen

Cats

5 Wild Animals



Animals that live in forest are called Wild animals. Lion, Tiger, Fox, Jackal, Giraffe, Zebra are some Wild animals. They live in natural habitat. A wild animal fulfills for every one of its own needs, namely shelter, food, and water

5.1 Animals that live in forest is called _____

Domestic animals

Wild animals

Aquatic animals

5.2 Identify the picture?



Lion

Deer

Tiger

Fox

6 Aquatic Animals

Crab



shrimp



Animals that are live in water most of the life time is called Aquatic animal. These include fish such as sharks, pufferfish, and angelfish, as well as mollusks, crustaceans, crabs, shrimp, whales, dolphins, and sea lions. Sea creatures include certain birds like seagulls and reptiles like turtles and saltwater crocodiles.

6.1

Animals that live in water most of the lifetime is called_____

Domestic animals

Wild animals

6.2

Identify the picture?



Dolphin

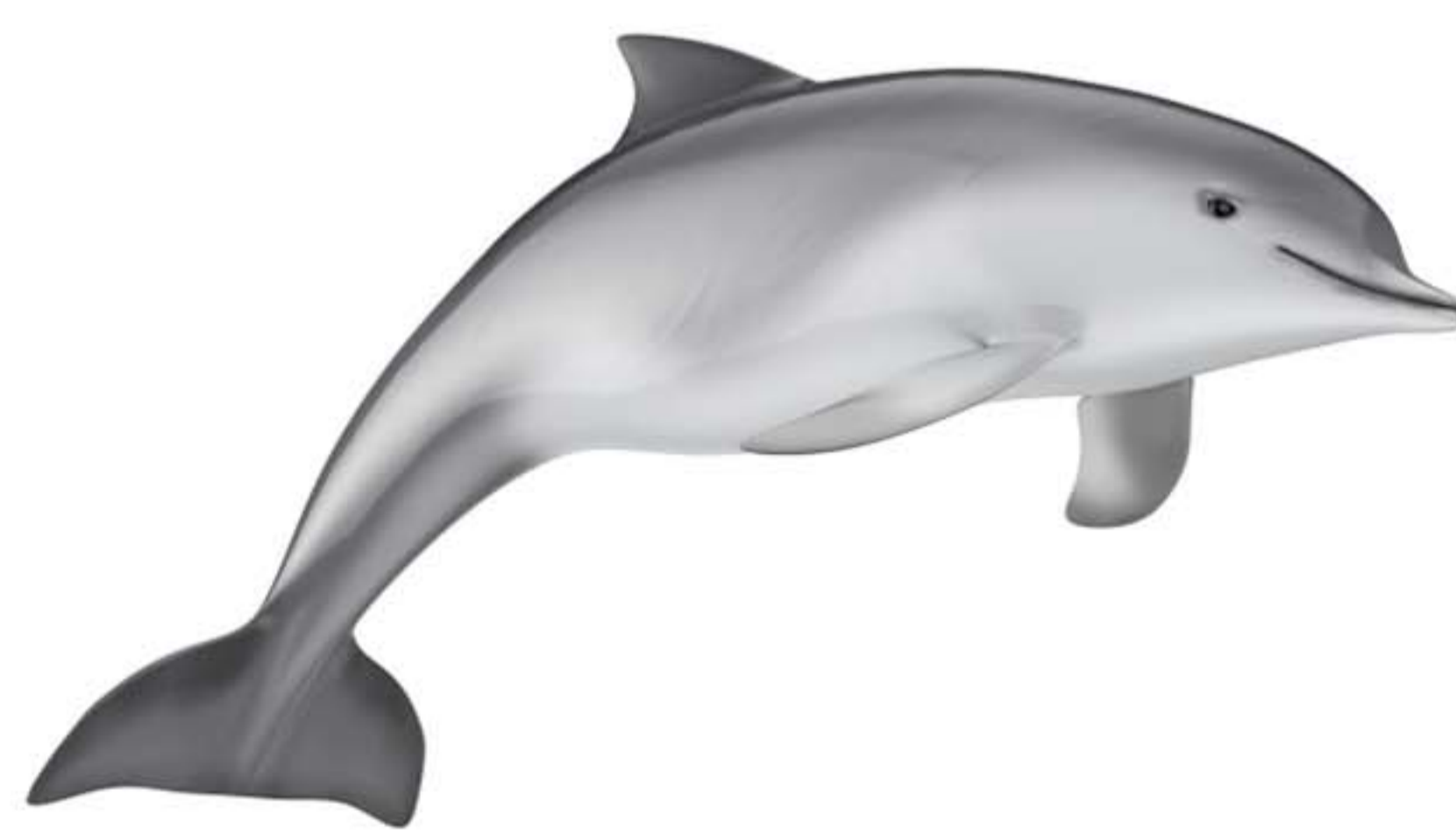
Whales

Sharks

Crocodiles

6.3

Identify the picture?



Dolphin

Whales

Sharks

Crocodiles

Answer key

- 1.1 False
- 1.2 All of these
- 1.3 Complex
- 2.1 5
- 2.2 All of these
- 2.3 Skin
- 2.4 Brain
- 3.1 True
- 3.2 Food
- 4.1 Domestic animals
- 4.2 Sheep
- 4.3 Cow
- 4.4 Hen
- 5.1 Wild animals
- 5.2 Lion
- 6.1 Aquatic animals
- 6.2 Crocodile
- 6.3 Dolphin

KIDS CHALLENGES

Chapter 2

Humans and Animals

1 Creating a Working Model of Human Lungs

Aim:

How do you make a respiratory system model with a balloon?



Materials used:

PET bottles (2), Straws, 3 balloons (2 small and 1 large), Tapes or glue, Scissors, Screwdriver.

Procedure:

Step 1: Make a screw hole on the top of the bottle cap and cut the bottle into halves as shown in the diagram.

Step 2: Attach the straws in such a way that they form the shape of the alphabet Y. This will work as the air pipe.

Step 3: Fix the straws in the bottle cap and attach it to the bottleneck as shown in the diagram.

Step 4: Cut the larger balloon and fix the larger portion at the bottom of the bottle as shown in the diagram.

Step 5: Now our model is ready. Pull the bottom balloon diaphragm, and you can see the inner balloon at the end of the wing pipes getting inflated.

Result:

The objective of this activity is to create a working model of human lungs to understand the process of respiration and the function of the human diaphragm.

2 Classification of animals

Aim:

Classify animals on the basis of their food

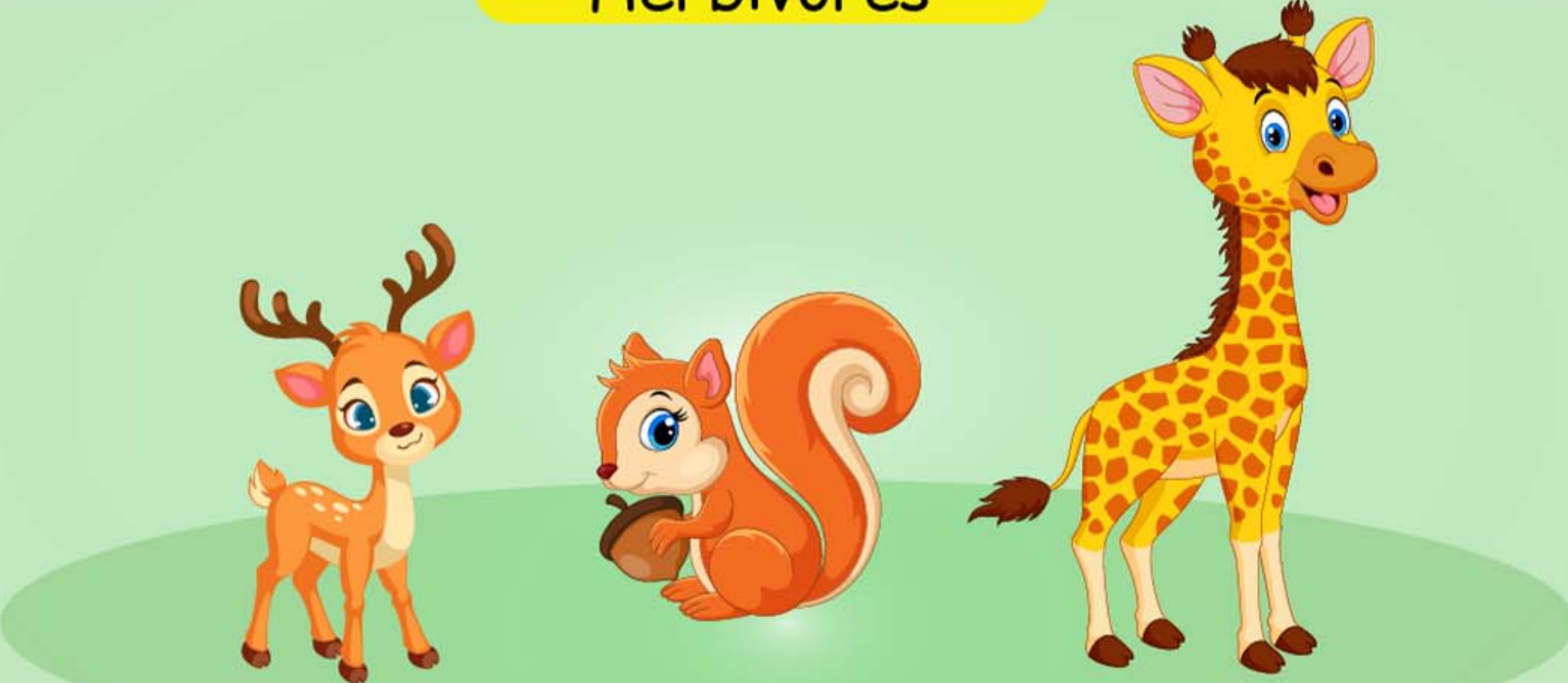
Carnivores



Omnivores



Herbivores



Materials used:

Images of animals, Paper, and pen

Procedure:

Step 1: Collect images of animals.

Step 2: Prepare a table namely Herbivores, Carnivores, and Omnivores..

Step 3: Classify the animals based on their food.

Result:

Herbivores are animals that eat only plants.

Carnivores are animals that eat only meat.

Omnivores are animals that eat both plants and meat.



KidsBuddy is an educational application platform designed for schools, teachers, and students to improve student learning outcomes in a measurable and visible way.

DOWNLOAD THE APP



GET IT ON
PLAY STORE

DOWNLOAD ON THE
APP STORE




3 Animals based on habitat

Aim:

To classify animals based on their living places.



Domestic animals	Wild animals
	

Materials used:

Images of animals, paper, and pen

Procedure:

Step 1: Collect images of animals.

Step 2: Prepare a table with two columns:
Domestic Animals and Wild Animals.

Step 3: Classify the animals based on their habitat, placing them in the appropriate column

Result:

Domestic animals are selectively bred and genetically modified over many generations to coexist with humans. They rely on humans for food, shelter, and other needs. Wild animals, on the other hand, live independently without any help from humans. They find their own shelter, food, water, and all other needs



KidsBuddy is an educational application platform designed for schools, teachers, and students to improve student learning outcomes in a measurable and visible way.

DOWNLOAD THE APP



GET IT ON
PLAY STORE



DOWNLOAD ON THE
APP STORE



QUIZ

Chapter 2

Humans and Animals

1 Which part of the bird helps them to fly?

Wings

Head

Leg

Beak

2 How many teeth does a human have?

32

34

26

42

3 What part of the body helps you to move?

Lungs

Eyes

Muscles

Heart

4 Guess the animal:: My skin is green and slippery .I have four legs and webbed feet. I eat bugs and little fish. I can swim under the water and hop on the land.Who am I?

Deer

Swan

Frog

Peacock

5

Guess the animal:: I have a long neck .
I have long legs .I am the tallest of all
animals .I eat leaves from trees and
bushes .Who am I?

Snake

Giraffe

Lion

Tiger

6

What is the colour of tiger's eye?

Blue

Yellow

Green

Orange

7

Which is a land animal from the given
options?

Elephant

Shark

Blue whale

Seahorse

8

Which is a domestic animal from the
following?

Tiger

Dog

Cheetah

Lion

9

Which insect made web?

Fly

Mosquito

Spider

Dragonfly

10

Identify the body part helps us to hear

Ears

Eyes

Nose

Skin

11

Which part of the body helps us to chew the food

Tongue

Teeth

Leg

Nails

12

Which part helps us to hold things?

Leg

Head

Nose

Hands

13

Identify the body part?

Eyes

Nose

Bones

Teeth



14 Identify the body part?

Head

Teeth

Hands

Toes



15 Identify the insect from the given option

Butterfly

Dove

Elephant

Crow

16 Identify the insect from the given option

Tiger

Rabbit

Snake

Dragon fly

17 You can open and close me, I'll help you to see thing. Who am I?

Mouth

Teeth

Eyes

Nose

18 Which group does it belongs to?

Water animal

Farm animal

Domestic animal

Wild animal

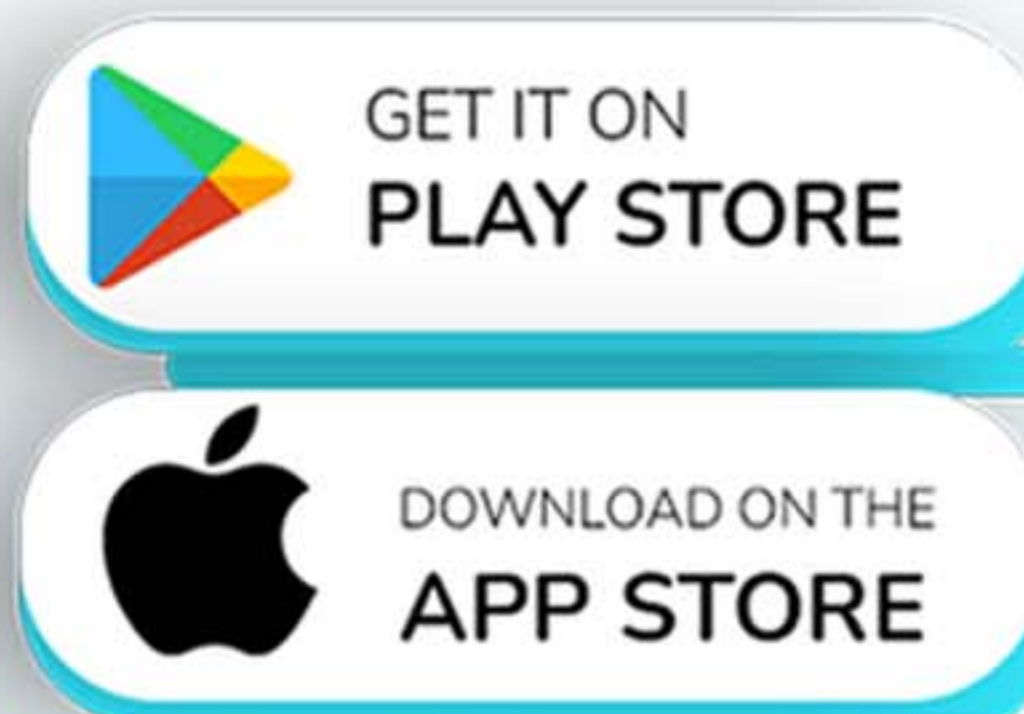
Answer key

- | | |
|------------|---------------|
| ① Wings | ⑪ Teeth |
| ② 32 | ⑫ Hands |
| ③ Muscles | ⑬ Bones |
| ④ Frog | ⑭ Hands |
| ⑤ Giraffe | ⑮ Butterfly |
| ⑥ yellow | ⑯ Dragon fly |
| ⑦ Elephant | ⑰ Eyes |
| ⑧ Dog | ⑱ Wild animal |
| ⑨ Spider | |
| ⑩ Ears | |



KidsBuddy is an educational application platform designed for schools, teachers, and students to improve student learning outcomes in a measurable and visible way.

DOWNLOAD THE APP



KNOWLEDGE CARDS

Chapter 3

Materials and Properties

1 Materials



Materials are the things that objects are made from. They have different qualities or properties that make them suitable for different uses. There are many different materials that we use every day, such as wood, metal, plastic, glass, and ceramics.

Wood is a natural material that comes from trees. It is strong, lightweight, and can be easily carved or shaped. We use wood to make furniture, houses, and many other things. Metal is a strong and durable material that can withstand high

temperatures and pressure. We use metal to make cars, buildings, and many other things. Plastic is another material that we use every day. It is lightweight, durable, and easy to mould into different shapes. We use plastic to make toys, containers, and many other things.

Glass is a transparent material that is made by heating sand or other minerals until they melt and then cooling them down quickly. It is fragile but has a smooth surface and is resistant to chemicals. We use glass to make windows, mirrors, and many other things. Ceramics are made by heating clay or other minerals at high temperatures until they harden. They are strong, durable, and resistant to heat and chemicals. We use ceramics to make dishes, tiles, and many other things.

1.1 Different materials we use are?

Wood

Metal

Plastic

All of these

1.2 Identify true or false.

Different materials have different properties

True

False

2 Wood



Wood is a material that comes from the branches of trees and shrubs. It is a natural material that is solid and hard. Wood can be used to make many things, like furniture, houses, and even toys.

One of the great things about wood is that it can be changed into any form. Wood can be cut, carved, and shaped into different shapes and sizes. This makes it a very versatile material that can be used for many different purposes.

Another important thing to know about wood is that it is considered a renewable natural resource. This means that we can grow more trees and use them to make more wood. As long as we plant new trees to replace the ones we use, we can continue to use wood as a material without depleting our natural resources.

2.1 Wood get from_____

Trees

Shrubs

Both of them

None of these

2.2 Wood is _____

Solid

Liquid

Gas

2.3 State True/ False.
Wood is considered as non -renewable resources

TRUE

FALSE

3 Material



Everything around us is made up of materials. Materials are things that we can see and touch. They have different properties that help us decide if they are suitable for a particular purpose. Materials can be found in nature or can be made by people. Natural materials include things like wood, stone, and cotton. Man-made materials include things like plastic, rubber, and metal. Materials can have many different properties. Some materials are strong, which means they can hold up a lot of weight. Other

materials are weak and can't hold up much weight. Some materials are heavy, which means they weigh a lot. Other materials are light and don't weigh very much. Materials can also be rough or smooth, shiny or dull, hard or soft, flexible or brittle, magnetic or non-magnetic, transparent or opaque. Some materials conduct electricity or heat, while others do not. Materials can exist in three different states: solid, liquid, or gas. Sometimes, they can change from one state to another.

3.1 All things are made with _____

Materials

Solid

Liquid

Gas

3.2 State True/False.
Materials are measurable

TRUE

FALSE

3.3

State True/False.

Materials are in 3 forms; Solid, Liquid, Gas

TRUE

FALSE

3.4

On the basis of making method materials can be classified into two. what are they?

Natural Materials

Man-made materials

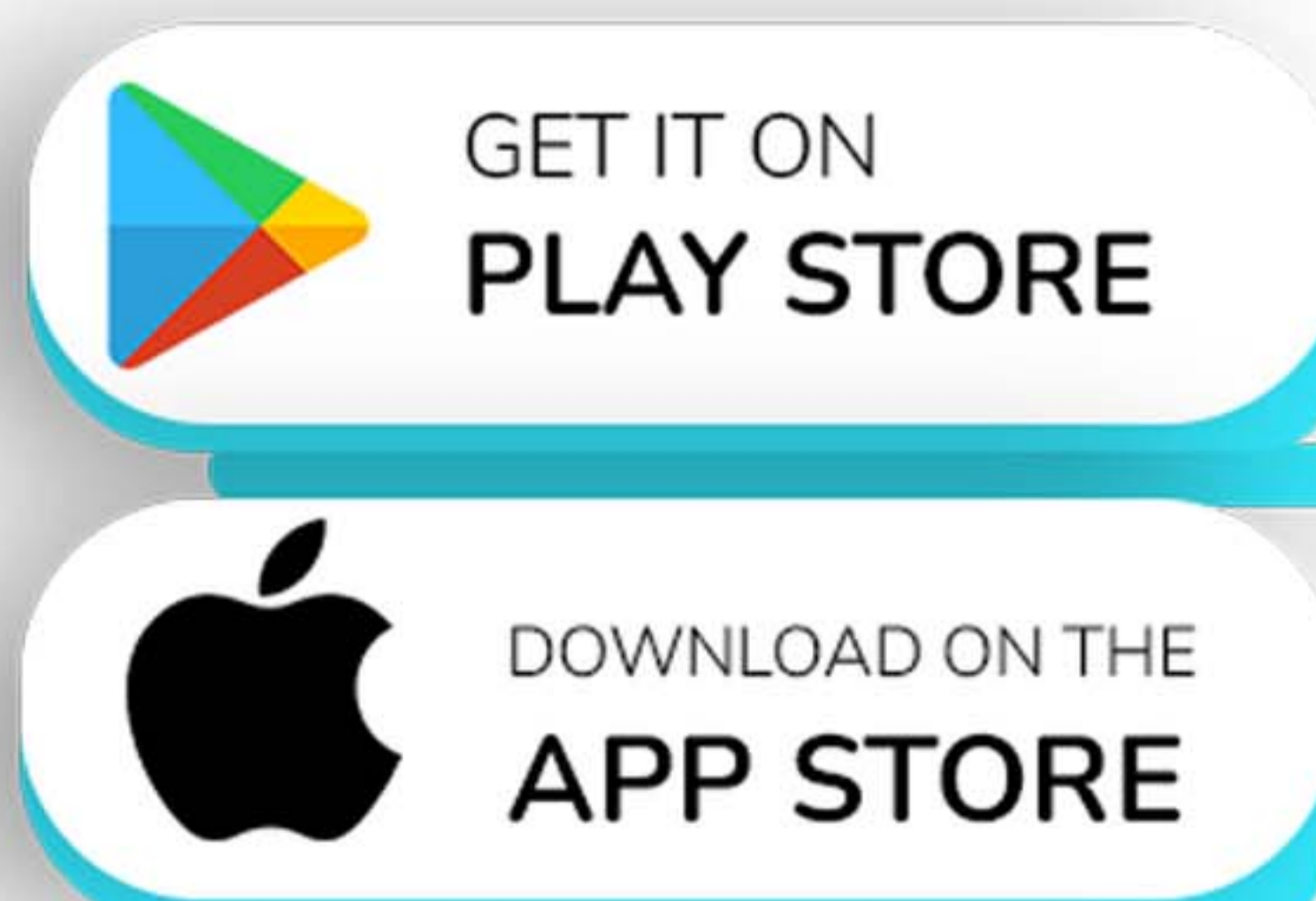
None of these

Both of them



KidsBuddy is an educational application platform designed for schools, teachers, and students to improve student learning outcomes in a measurable and visible way.

DOWNLOAD THE APP



4 Plastic



Plastics are a type of substance that can be molded into practically any shape, making them extremely versatile. They are durable, lightweight, and sturdy, and are able to withstand water, heat, chemicals, and electricity without being damaged. Another advantage of plastics is that they can be produced in a variety of colors, making them perfect for use in toys, among other things. However, despite their

many benefits, plastics are also a major source of pollution. When plastics are discarded improperly, they can contaminate soil and water, causing harm to plants and animals. Additionally, when plastics are burned or incinerated, they release harmful pollutants into the air, which can have a negative impact on human health. It is important to be aware of the impact of plastics on the environment and to take steps to reduce our use of them wherever possible. By doing so, we can help to minimize the negative effects of plastics on our planet and ensure a healthier, more sustainable future for generations to come.



KidsBuddy is an educational application platform designed for schools, teachers, and students to improve student learning outcomes in a measurable and visible way.

DOWNLOAD THE APP



GET IT ON
PLAY STORE



DOWNLOAD ON THE
APP STORE



4.1 A type of substance that can be molded into practically any shape is

Metal

Wood

Glass

Plastic

4.2 Select the features of plastic

Lightweight

Durable

Resist electricity

All of the above

4.3 State True/ False.
Plastic causes Soil pollution and Air pollution.

TRUE

FALSE



KidsBuddy is an educational application platform designed for schools, teachers, and students to improve student learning outcomes in a measurable and visible way.

DOWNLOAD THE APP 

GET IT ON
PLAY STORE

DOWNLOAD ON THE
APP STORE



5 Glass



Sand is heated to an extremely high temperature, which produces glass. Glass is a typically transparent substance. Humans have been using glass for thousands of years; it has a wide range of applications and can be molded into a variety of shapes.

5.1

Sand is heated to an extremely high temperature, which produces glass, a typically transparent substance that is called_____

Metal

Wood

Glass

Plastic

5.2

State True/ False.
Humans have been using glass for thousands of years

TRUE

FALSE



KidsBuddy is an educational application platform designed for schools, teachers, and students to improve student learning outcomes in a measurable and visible way.

DOWNLOAD THE APP



GET IT ON
PLAY STORE



DOWNLOAD ON THE
APP STORE



Answer key

- | | | | |
|-----|--------------|-----|------------------|
| 1.1 | All of these | 3.1 | Materials |
| 1.2 | TRUE | 3.2 | TRUE |
| 2.1 | Both of them | 3.3 | TRUE |
| 2.2 | Solid | 3.4 | Both of them |
| 2.3 | FALSE | 4.1 | Plastic |
| | | 4.2 | All of the above |
| | | 4.3 | TRUE |
| | | 4.1 | Glass |
| | | 4.2 | TRUE |

KIDS CHALLENGES

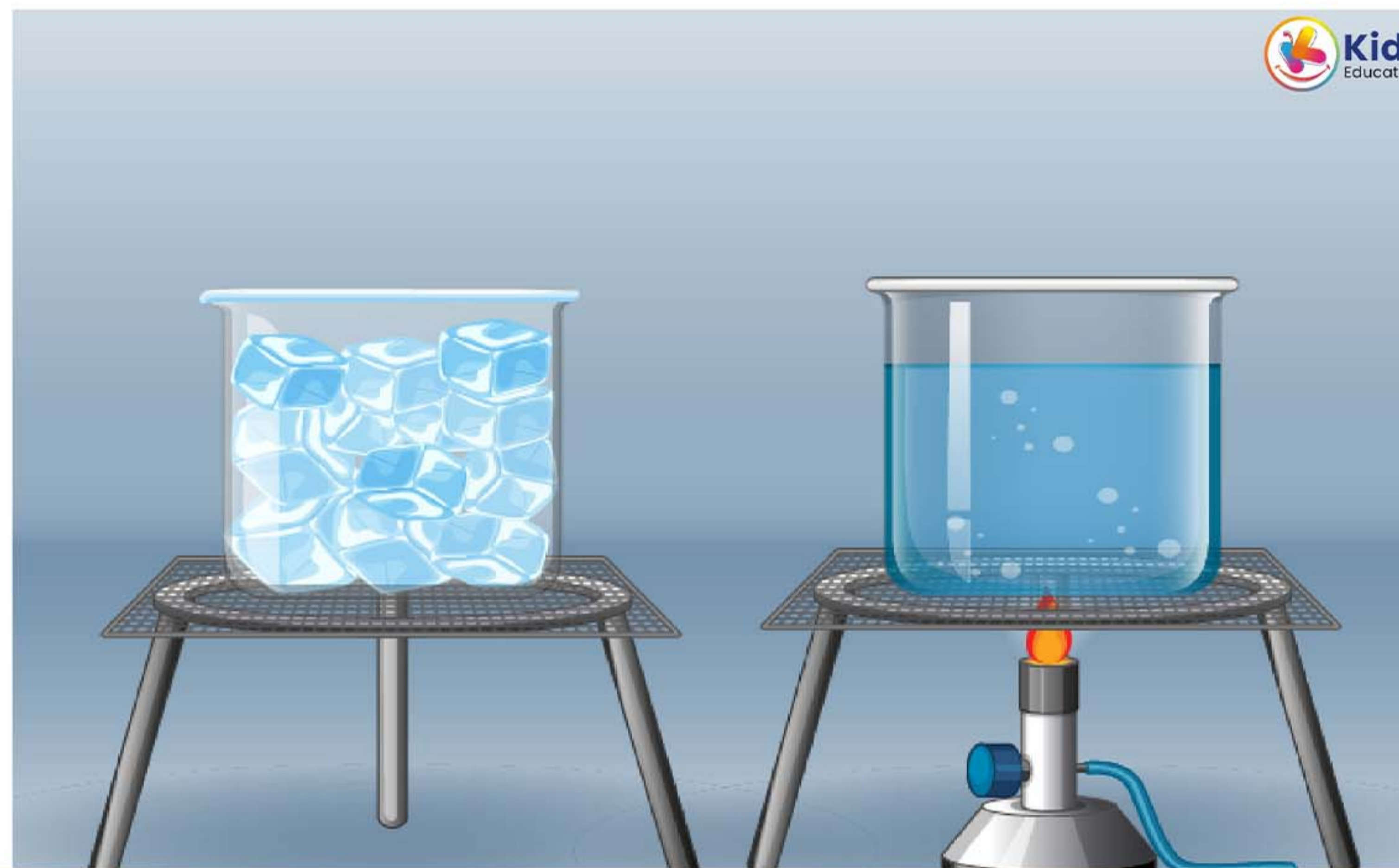
Chapter 3

Materials and Properties

1 Forms of water

Aim:

Let's conduct a simple experiment to explore the different forms of water and observe the changes they undergo under different conditions.



Materials used:

Water

Procedure:

Step 1: Pour water into a glass and observe its form. Is it liquid or solid?

Step 2: Place the glass of water in the freezer for at least five hours. After five hours, examine the form of the water. Has it changed from its original form?

Step 3: Heat water in a pot or on a stove until it boils. Observe the form of the water. Has it changed from its original form?

Step 4: Spread sand over the glued portion of the paper..

Step 5: Write down your findings in a paper or notebook.

2 Ice melts

Aim:

To explore the properties of different states of matter through a simple experiment.



Materials:

Container, Ice cubes, Warm water, Hot water.

Procedure:

Step 1: Fill one container with warm water and the other with cold water.

Step 2: Add a few ice cubes to each container.

Step 3: Observe what happens to the ice cubes in both containers.

Step 4: Take note of any changes you observe.



KidsBuddy is an educational application platform designed for schools, teachers, and students to improve student learning outcomes in a measurable and visible way.

DOWNLOAD THE APP



3 Sorting and Classifying

Aim:

To learn how to sort and classify objects based on their properties.



Materials used:

Metal, plastic, wood, glass, ceramics, synthetic fibers, composites.

Procedure:

You can learn to sort and classify objects based on their properties, such as sorting objects by color, shape, texture, or material

Result:

Understanding that all materials are different based on their properties.



KidsBuddy is an educational application platform designed for schools, teachers, and students to improve student learning outcomes in a measurable and visible way.

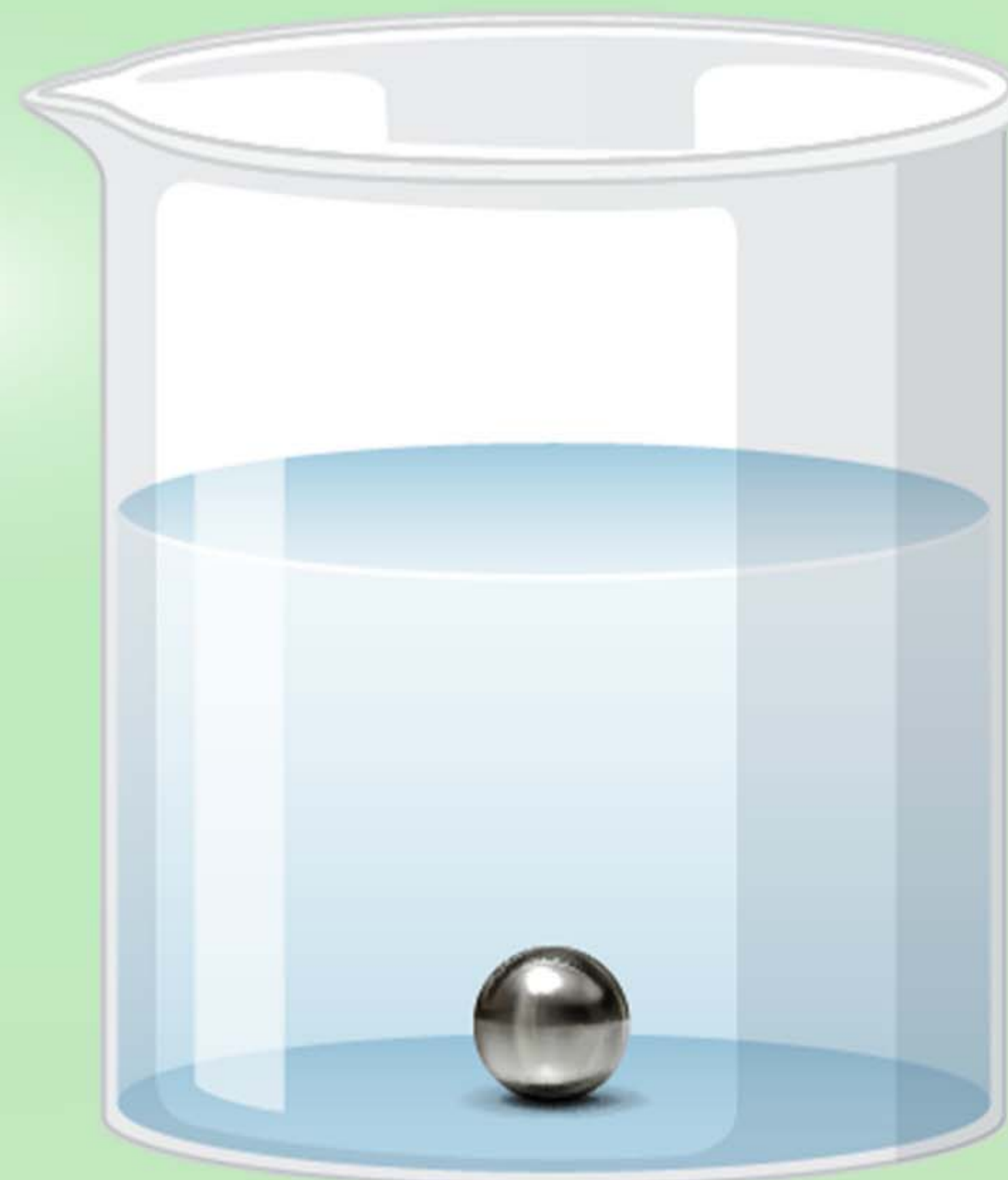
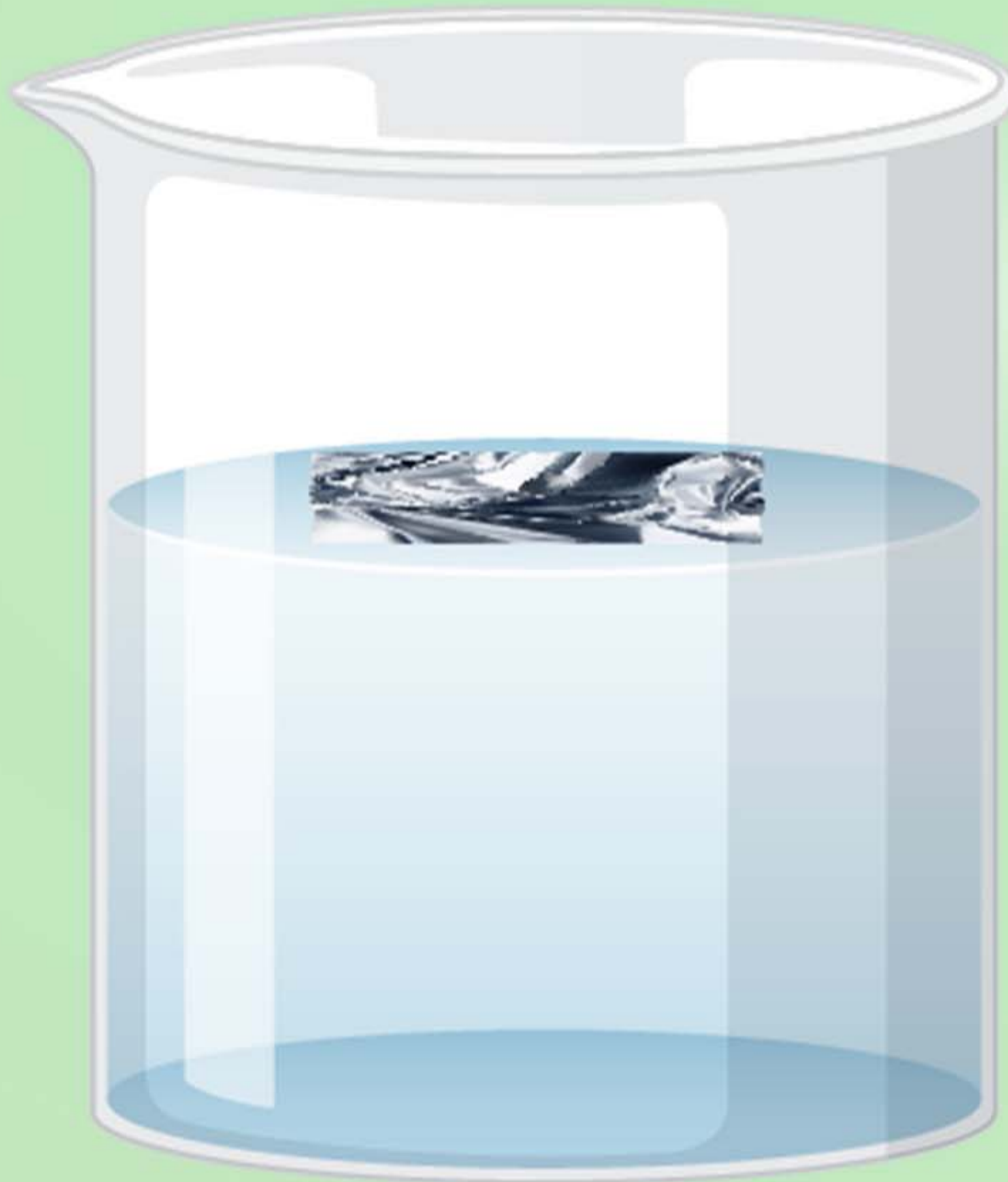
DOWNLOAD THE APP



4 Floating and Sinking

Aim:

To investigate the properties of matter



Materials:

Bowl, water, aluminium foil

Procedure:

Step 1: Fill a bowl with water

Step 2: Take a sheet of aluminium foil and place it on the surface of the water

Step 3: Crumple the aluminium foil into a ball and place it in the water

Step 4: Take note of any changes you observe.

Result:

Objects with lower density than water will float on the surface while objects with higher density will sink to the bottom. Note that this activity can be expanded upon by experimenting with different materials and objects to observe their floating and sinking behaviour. Additionally, it's important to emphasize that the floating and sinking behaviour of objects is determined by their density relative to the density of the liquid they are placed in.

QUIZ

Chapter 3

Materials and Properties

1 What will you get when water freeze?

Ice

Hot water

Gas

Plain water

2 Which is a liquid object from the following?

Rocks

Water

Table

Air

3 Which of the following is filled with air?

Football

Balloon

Tyre

All of these

4 Where do wool come from?

Sheep

Mud

Lion

Tiger

5 Which of the following material is NOT waterproof?

Rubber

Paper

6 Which material is rigid?

Rubber

Paper

Wood

Plastic

7 True or false
Silk is a natural fibre.

True

False

8 What you will fill in a ball?

Liquid

Solid

Gas

9 Which of the following object is filled with air?

Cycle tyre

Coin

Candle

Wall

10 We cannot _____ air

See

Breathe

Feel

11

Is this a natural material?



Yes

No

12

What is a natural material?

Man made

Get from nature

Get from sky

13

Identify the given image is an artificial (man made) or natural material?



Man made

Natural material

14 What is the form of stone?

Solid

Liquid

Gas

15 What is the name of this material?



Chalk

Stone

Paper

Wood

16 What is the name of this material?



Fan

Light

Television

Cup

17

What is the name of this material?



Laptop

Television

Oil

Mobile phone

18

What is the name of this material?



fabric

Wool

Candle

Coin

Answer key

- | | |
|----------------|--------------------|
| ① Ice | ⑧ Gas |
| ② Water | ⑨ Cycle tyre |
| ③ All of these | ⑩ See |
| ④ Sheep | ⑪ No |
| ⑤ Paper | ⑫ Get from nature |
| ⑥ Wood | ⑬ Natural material |
| ⑦ TRUE | ⑭ Solid |
| | ⑮ Paper |
| | ⑯ Cup |
| | ⑰ Laptop |
| | ⑱ Coin |



KidsBuddy

Educational Application

KidsBuddy is an educational application platform designed for schools, teachers, and students to improve student learning outcomes in a measurable and visible way.

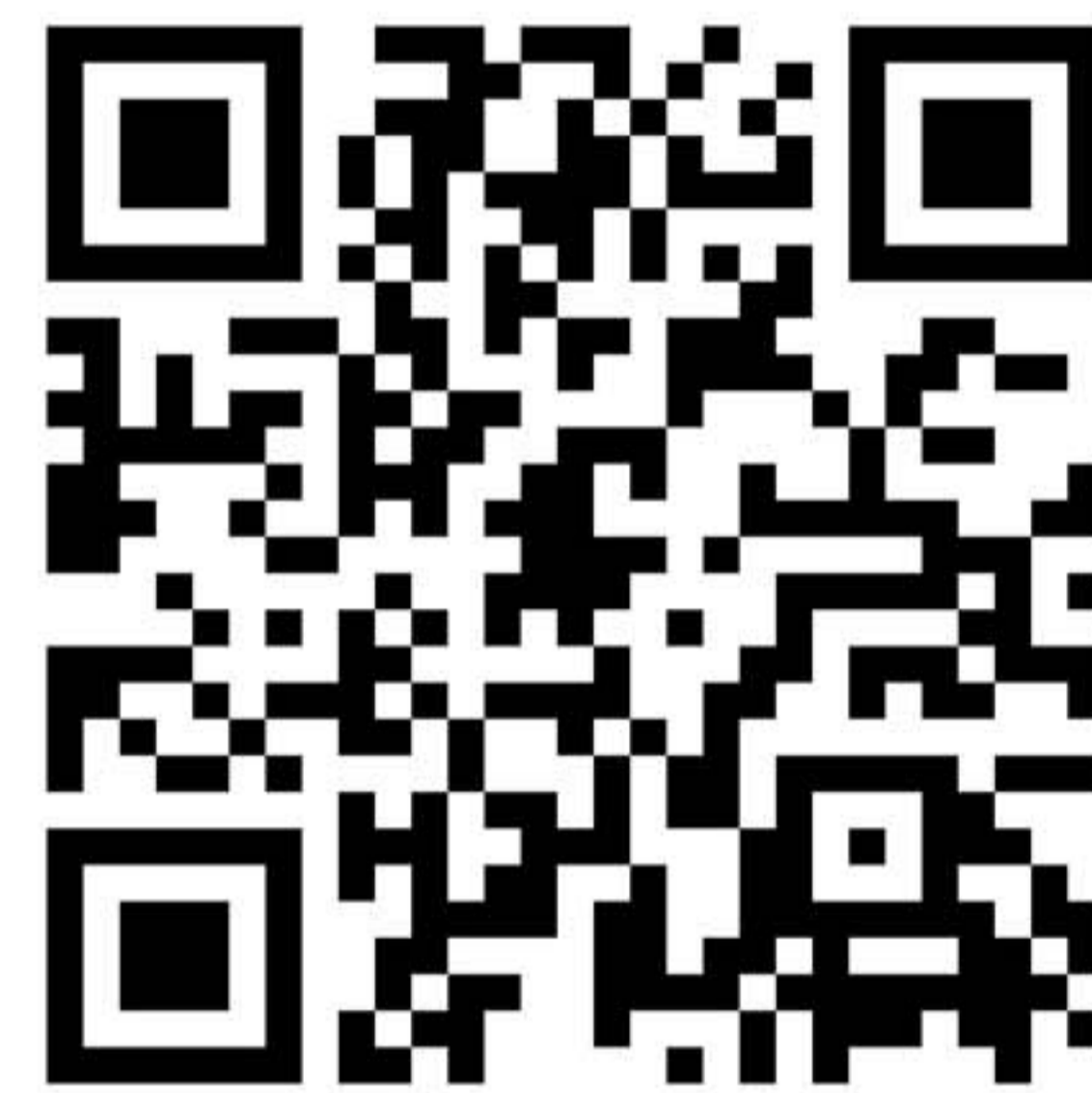
DOWNLOAD THE APP



GET IT ON
PLAY STORE



DOWNLOAD ON THE
APP STORE



 kidsbuddyapp.com  admin@kidsbuddyapp.com  +971556688495

